

# Office to let

## Isho Offices - III

Timișoara, 46C, Take Ionescu Boulevard, Timisoara



### Building information

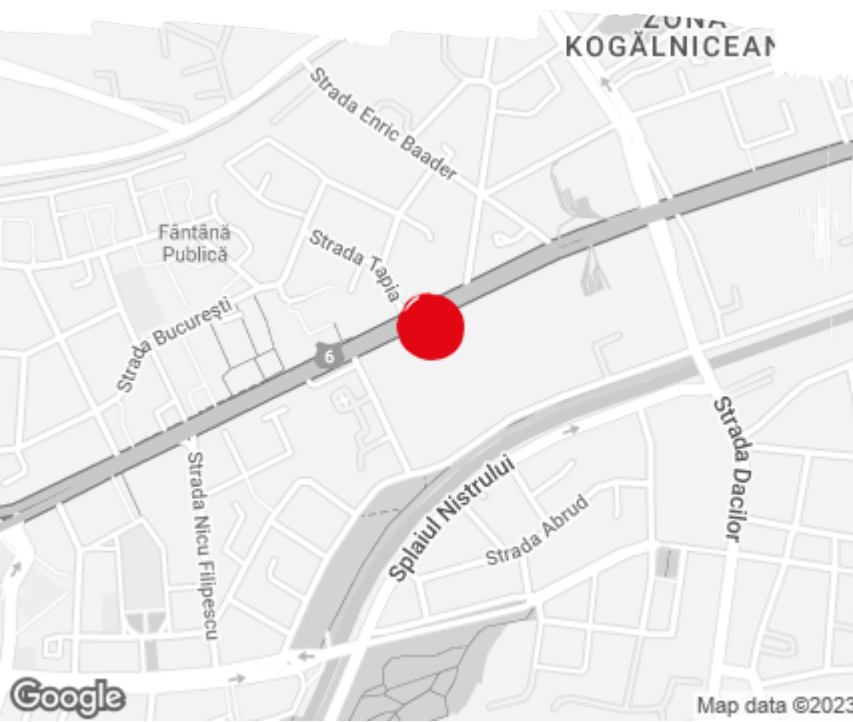
Building status	Existing
Year of construction	2020
Parking ratio	1 / 38 sq m
Total building area	18 000 sq m

### Commercial terms

Office space*	after login *
Parking	after login *
Service charge*	after login *
Minimum lease term	after login *
Availability	after login *

\* Asking terms for m<sup>2</sup>/month

### Location



### Available space

6 540 sq m

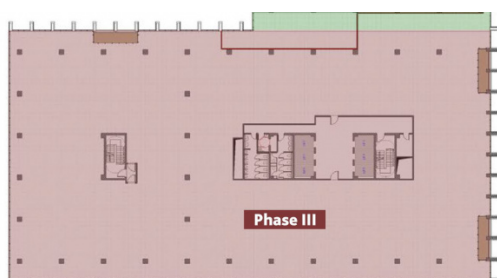
Available office space

1 240 sq m

Minimum office space



## Typical floor plan



## Available space

Floor	Vacant space	Availability
0 *	please contact us *	please contact us *
1	please contact us *	please contact us *
2	please contact us *	please contact us *
5	please contact us *	please contact us *
7	please contact us *	please contact us *
Total	after login *	

(\*) Retail space

## Public transport

Bus: 46, 11, 17

Tram: 1, 10

## Contact



+40 21 302 3400

More information